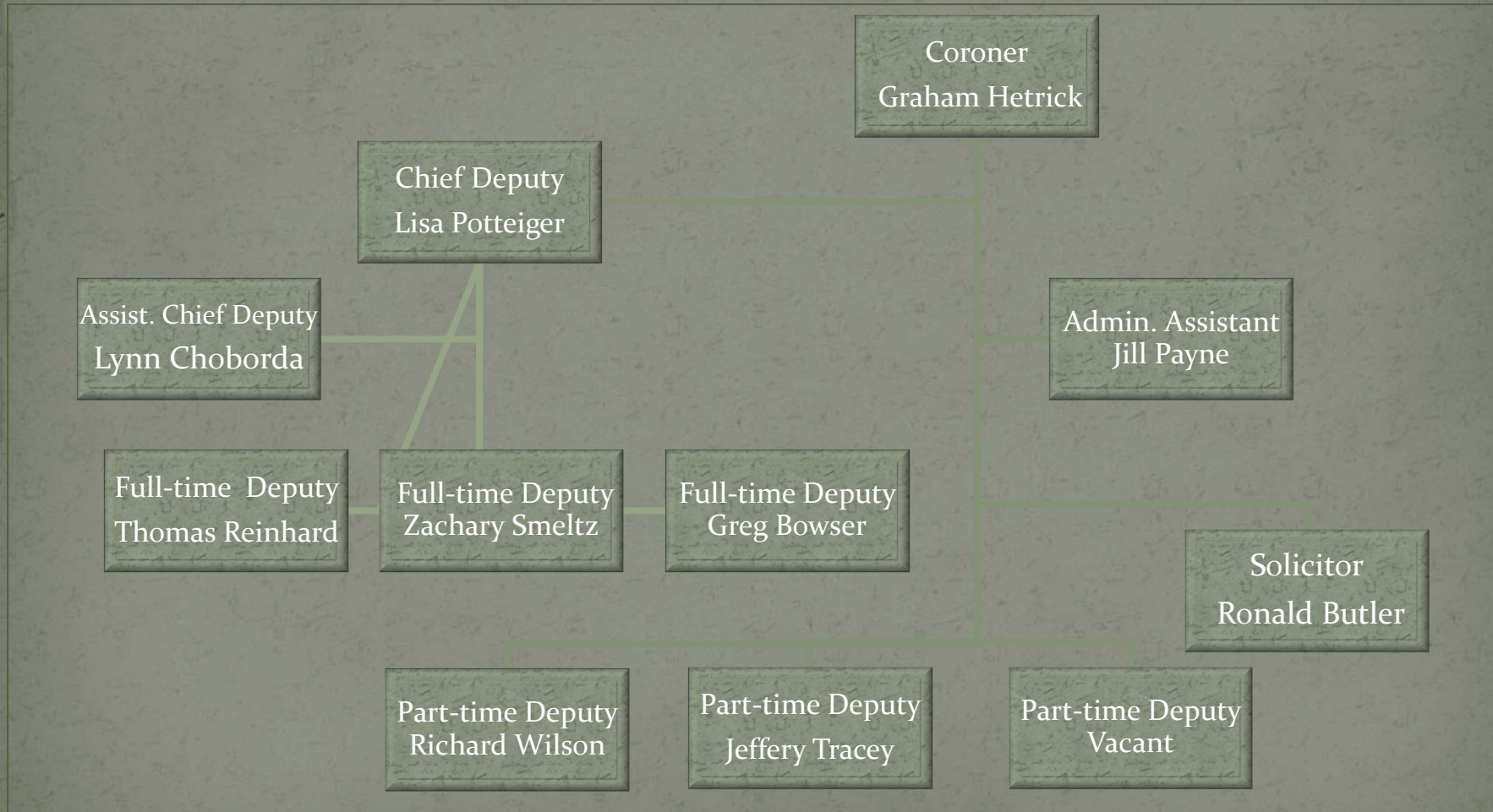


2015 Coroner's Report



2015 Organizational Chart

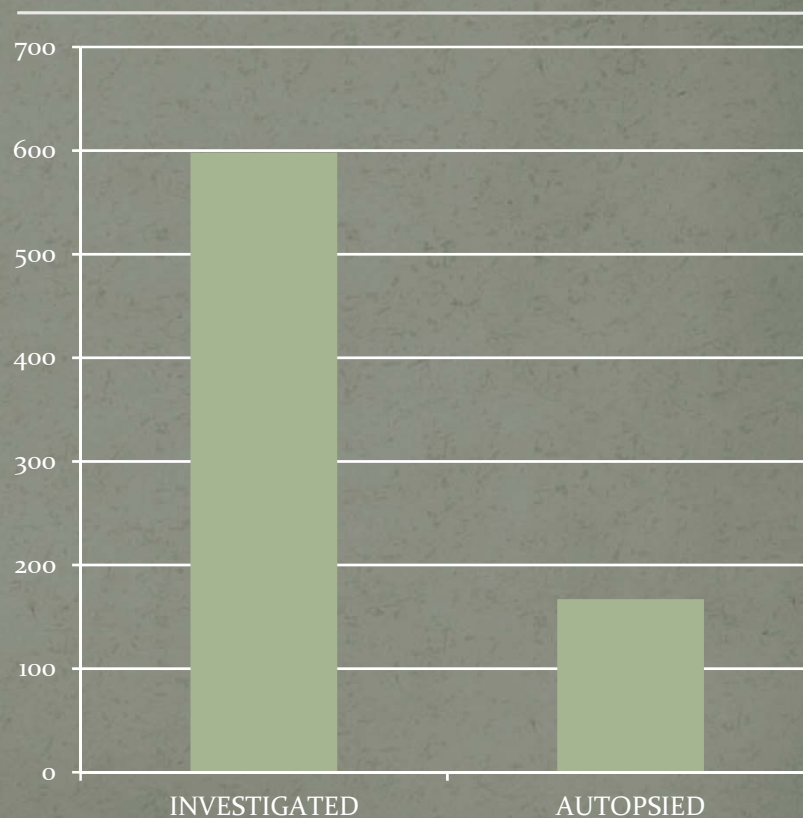


In 2015 828 cases ** were referred to this office, of them 72 % required an investigation. Of those investigated 28 % required an autopsy

Total deaths reported



Deaths requiring an autopsy



**Cremation Authorizations

- In this process, the deceased is placed in a cremation chamber and subjected to extreme heat and direct flame so as to convert the body into cremains. It is the duty of the Coroner's office to review each death when a cremation is requested because the is an irreversible process. Occasionally, a Death Certificate is improperly issued by a physician. The manner of death may indicate a natural death when a past incident deems it accidental or possibly a homicide. For each request, the cause of death is reviewed. Last year this office received 1687 requests for permission to cremate.

INVESTIGATED DEATHS

	NATURAL	ACCIDENTAL	HOMICIDE	SUICIDE	PENDING	UNDETERMINE	TOTALS
January	36	19	2	4	0	0	61
February	29	11	1	5	0	0	46
March	26	12	0	3	0	0	41
April	16	13	2	6	1	2	40
May	32	14	5	4	1	3	59
June	20	20	0	4	0	2	46
July	26	24	3	4	0	1	58
August	30	20	2	1	2	0	55
September	20	17	2	4	0	1	44
October	19	14	2	2	0	0	37
November	27	25	5	1	0	0	58
December	29	16	1	3	4	0	53
Totals	310	205	25	41	8	9	598

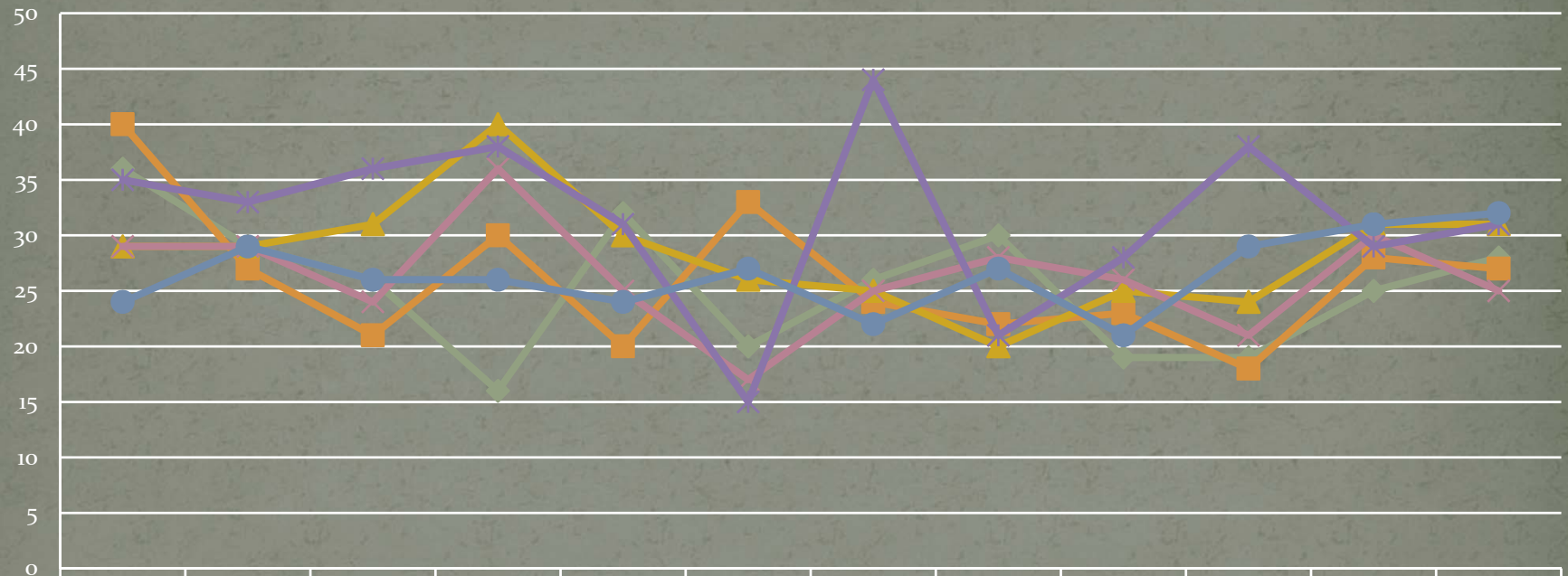
NATURAL DEATHS

Monthly Totals



	Totals	Heart	Lungs	Disease	Gastro	Drug Alcohol	Neurological	Adult	Other
January	36	27	1	3	3	1		1	
February	29	19	2	3	4		1		
March	26	17	2	2		3	1	1	
April	16	12			2	1	1		
May	32	18	4	3	1	2	3	1	
June	20	18	1			1			
July	26	21	3		2				
August	30	18	5	3	1	1	2		
September	20	14	1	3				1	1
October	19	12	1	2		1	1	2	
November	27	19	2	5			1		
December	29	18	5	3			2	1	
Totals	310	213	27	27	13	10	12	7	1

Natural Deaths Comparison



	January	February	March	April	May	June	July	August	September	October	November	December
2015	36	29	26	16	32	20	26	30	19	19	25	28
2014	40	27	21	30	20	33	24	22	23	18	28	27
2013	29	29	31	40	30	26	25	20	25	24	31	31
2012	29	29	24	36	25	17	25	28	26	21	30	25
2011	35	33	36	38	31	15	44	21	28	38	29	31
2010	24	29	26	26	24	27	22	27	21	29	31	32

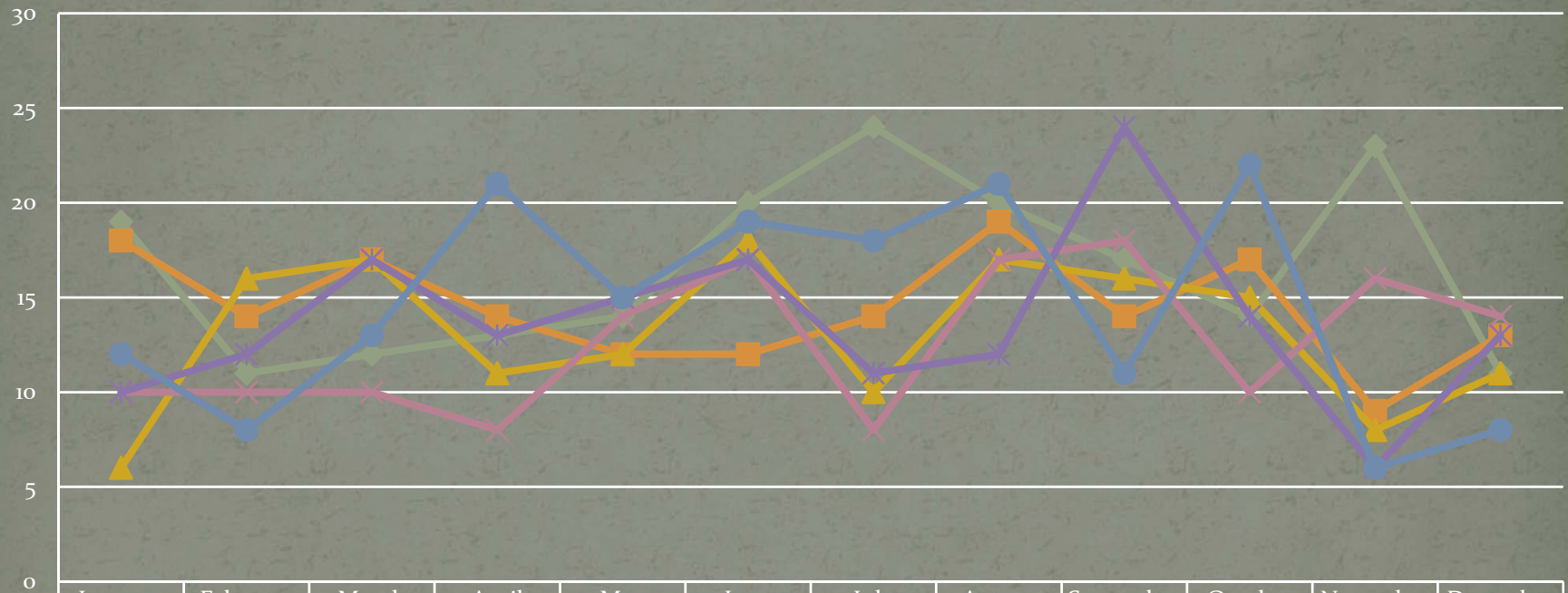
ACCIDENTAL DEATHS

Monthly Totals



	Totals	Motor Vehicle	Overdose	Fall	Aspiration	Swim/Dive	Other
January	19	2	8	7			2
February	11	6	2	3			
March	12	2	5	4	1		
April	13	3	7	2	1		
May	14	6	1	5		1	1
June	20	5	5	8		2	
July	24	5	10	5	1	1	2
August	20	4	9	4		1	2
September	17	3	8	5			1
October	14	2	2	9			1
November	25	11	8	5			1
December	16	1	6	9			
Totals	205	50	71	66	3	5	10

Accidental Deaths ~ Comparison



	January	February	March	April	May	June	July	August	September	October	November	December
2015	19	11	12	13	14	20	24	20	17	14	23	11
2014	18	14	17	14	12	12	14	19	14	17	9	13
2013	6	16	17	11	12	18	10	17	16	15	8	11
2012	10	10	10	8	14	17	8	17	18	10	16	14
2011	10	12	17	13	15	17	11	12	24	14	6	13
2010	12	8	13	21	15	19	18	21	11	22	6	8

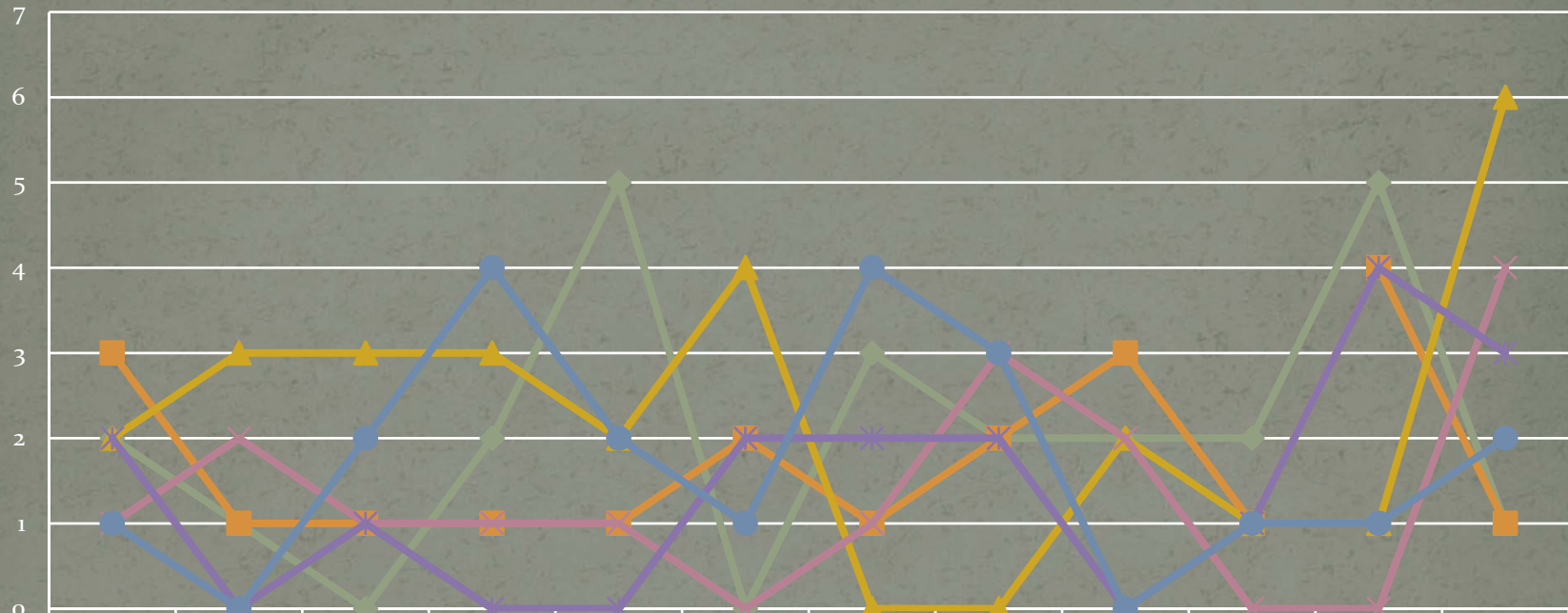
HOMICIDES

Monthly Totals

CRIME SCENE - DO NOT CROSS

	Totals	Gunshot Wounds	Stabbing	Traumatic Injuries	Other
January	2	1	1		
February	1	1			
March	0				
April	2	1		1	
May	5	4			1
June	0				
July	3	3			
August	2	2			
September	2	1	1		
October	2	2			
November	5	5			
December	1	1			
Totals	25	20	2	1	1

Homicides ~ Comparison



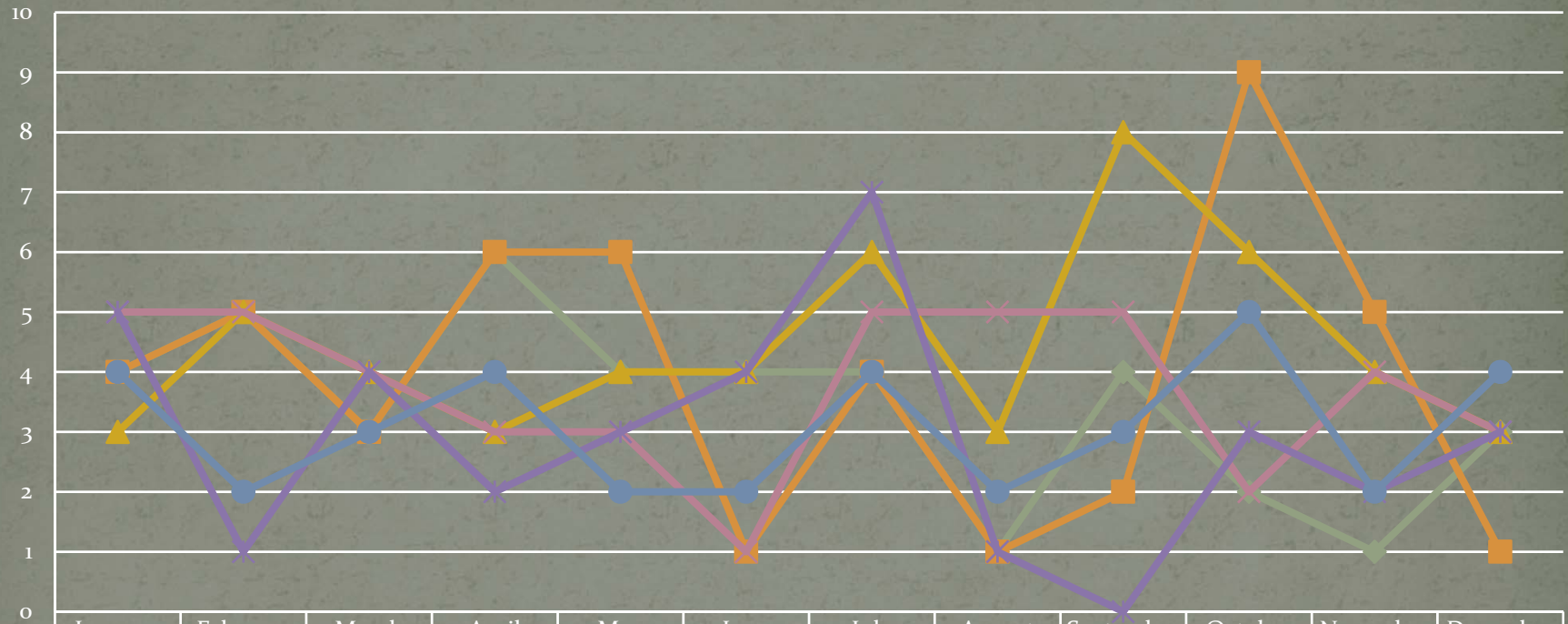
	January	February	March	April	May	June	July	August	September	October	November	December
2015	2	1	0	2	5	0	3	2	2	2	5	1
2014	3	1	1	1	1	2	1	2	3	1	4	1
2013	2	3	3	3	2	4	0	0	2	1	1	6
2012	1	2	1	1	1	0	1	3	2	0	0	4
2011	2	0	1	0	0	2	2	2	0	1	4	3
2010	1	0	2	4	2	1	4	3	0	1	1	2

SUICIDE

Monthly Totals

	Totals	Gunshot Wound	Overdose	Hanging	Other
January	4	3	1		
February	5	3	1		1
March	3	1	1	1	
April	6	3	2		1
May	4	2		2	
June	4	3			1
July	4	3			1
August	1	1			
September	4	4			
October	2	1			1
November	1	1			
December	3	1		1	1
Totals	41	26	5	4	6

Suicide ~ Comparison

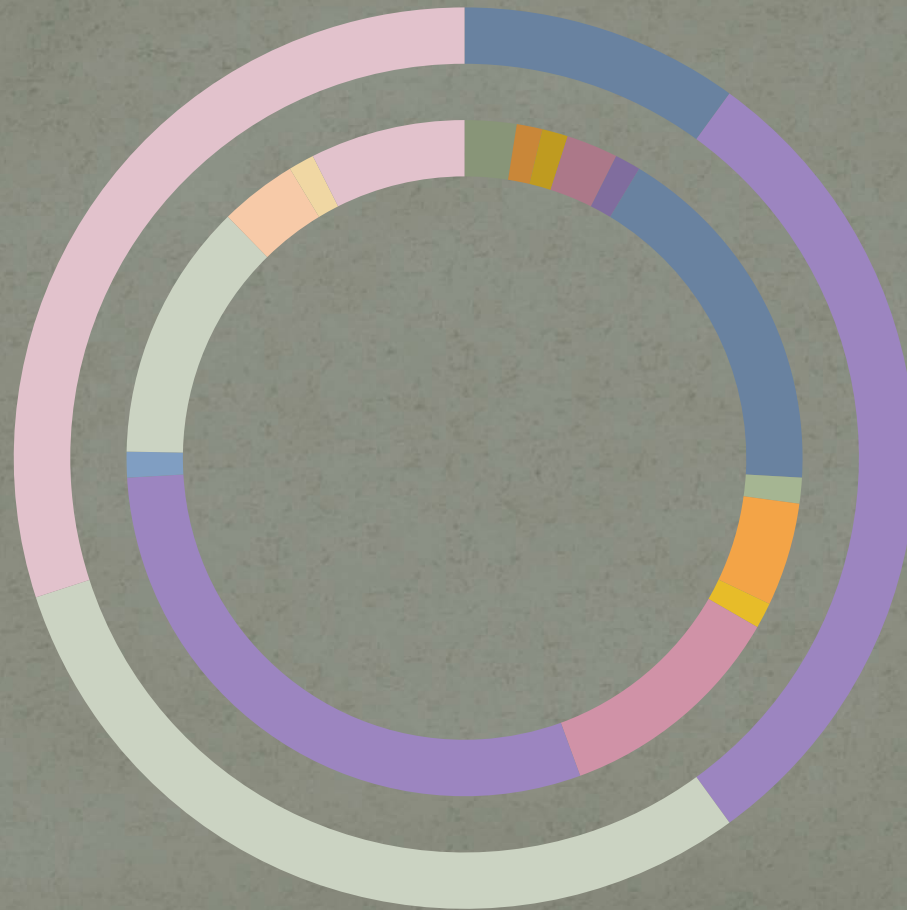


	January	February	March	April	May	June	July	August	September	October	November	December
2015	4	5	3	6	4	4	4	1	4	2	1	3
2014	4	5	3	6	6	1	4	1	2	9	5	1
2013	3	5	4	3	4	4	6	3	8	6	4	3
2012	5	5	4	3	3	1	5	5	5	2	4	3
2011	5	1	4	2	3	4	7	1	0	3	2	3
2010	4	2	3	4	2	2	4	2	3	5	2	4

Death where Incident Occurred in an Outside County (*State)

	INVESTIGATED	AUTOPSY
Adams	2	0
Berks	1	0
Blair	1	0
Centre	2	0
Clinton	1	0
Cumberland	14	1
Fayette	1	0
Franklin	4	0
Huntingdon	1	0
Lancaster	9	0
Lebanon	24	3
Mifflin	1	0
Perry	10	3
Schuylkill	3	0
*Watauga NC	1	0
York	6	3
Total	81	10

Outside of the County



- Adams
- Berks
- Blair
- Centre
- Clinton
- Cumberland
- Fayette
- Franklin
- Huntingdon
- Lancaster
- Lebanon
- Mifflin
- Perry
- Schuylkil
- Watauga NC
- York

Improvements

- I-Mobile \$2640
- New Camera \$999
- Ultra Sound \$950
- Portable Digital
Video Microscope \$2500
- Optical Microscope \$700 (2)

Internship Program

- . Participation with over six universities and colleges
- Gives practicable train for those entering forensics or the medical field
- Resident program with the Hershey Medical Center
- Allows for research and expansion of our own forensic procedures

Issues

- Deputies and personnel are Act 120 trained and allowed to carry weapons for protection use only. Due to the fact that we provide our own security during investigation and also at the forensic facility this training was deemed necessary
- Radios in all of the trucks (This has been a four year project)
- We will be placing in each vehicle Kevlar vest in the near future

cont

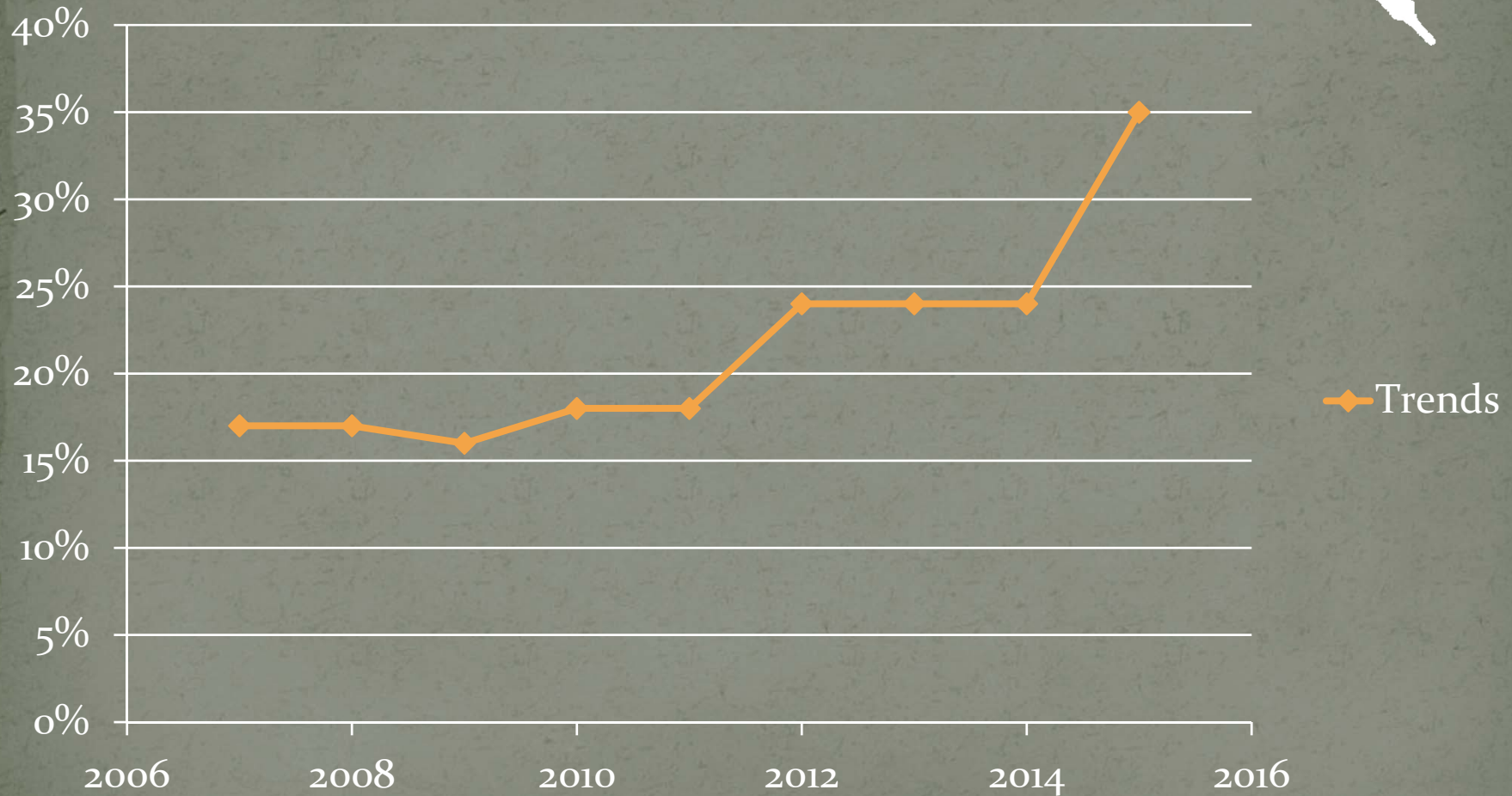
- Admission blood ~ we need to bring hospitals on board in holding all admission blood until patient disposition is determined.
- Working with Counties to take back or (keep) an investigation where the etiology of the incident was in another county and the death was in Dauphin County.
- Educate Emergency Departments/Assisted Living facilities on “Coroner interest” We will start programs with first responders concerning the role of our office

Overdose related

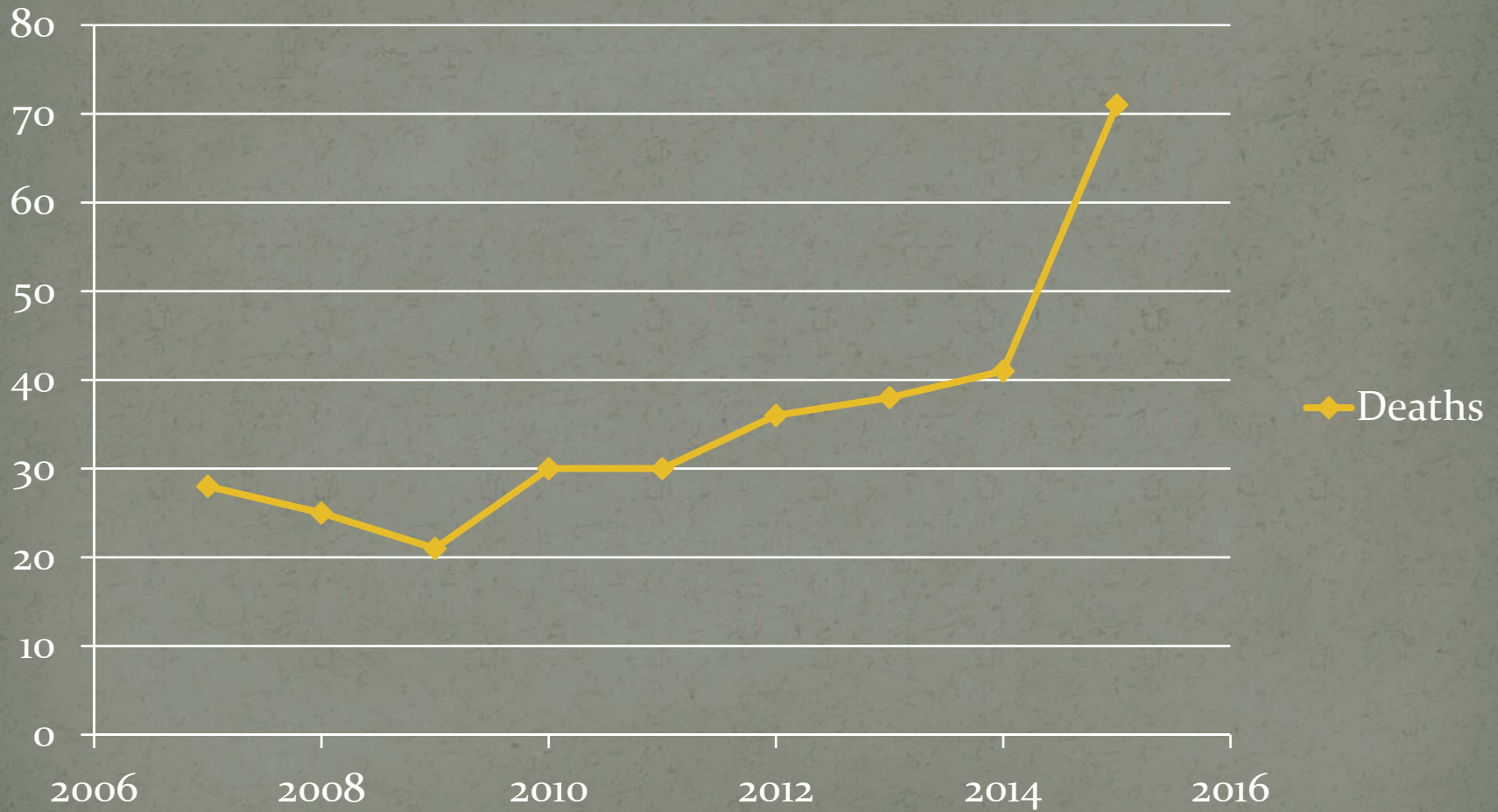
- There has been an epidemic of drug related deaths.
- There is a 11% increase over last year in the percentage of death investigations that are drug related
- Actual drug deaths in 2014 was 41 and increased to 71 in 2015
- Most of the drug death involved opioids in combination with other drugs
- Solely heroine deaths were also on the rise

Overdose~ Percentage

Of the accidental deaths investigated the percentage that were drug related.



Overdose ~Deaths



Conclusion

- This office is busier than in previous years
- Opioid death the the pursuing investigations and prosecutions will have a significant impact on both the Coroner's medical services budget and the District Attorneys office.
- We must prepare for the future needs of increased manpower and facilities due to increased demands for improved forensic services and increasing caseload
- We must collaborate with adjoining Counties to prepare for mutual aid in case of mass disaster